

17 Skyline Drive

Mid-Westchester Executive Park, Hawthorne, New York



Stunning architecture and a headquarters-quality executive park setting define this award-winning property.

17 Skyline Drive in Mid-Westchester Executive Park—winner of BOMA's Office Building of the Year Award in 2006—sets the standard for an ideal suburban office environment. With a distinctive design that's both appealing and practical, it allows for numerous corner offices and dramatic views. Extraordinary amenities abound, including generous underground executive parking. And the property's strategic location in Westchester County places your business just minutes from leading highways and mass transportation.

This premier property features:

- Two stories totaling 90,000 square feet of class A office space
- Twelve corner offices per floor
- An award-winning building in an award-winning office park setting—both 17 Skyline Drive and Mid-Westchester Executive Park have received the prestigious TOBY Award for excellence in property management
- Two-level underground parking garage accommodating 90 vehicles
- A sky-lit atrium lobby
- Card-key access control and state-of-the-art telecommunications capability
- Two passenger elevators
- Freight elevator in enclosed loading dock area
- Beautifully landscaped 75-acre campus setting overlooking the Rockefeller Estates and the Grasslands Reservation

- A host of park amenities including on-site child care, cafeteria, express mail drops and convenient public transportation
- Hotel, fitness center and numerous dining choices adjacent to the Park
- Expansion opportunities with available land for the development of up to 82,250 square feet of office or flex space

Mack-Cali offers your business distinct advantages:

- Comprehensive in-house services provide a seamless and efficient process, covering every aspect from leasing and move-in to day-to-day operations.
- Extensive portfolio of properties offers a wide selection of locations to accommodate expansion, relocation or build-to-suit needs.
- Mack-Cali's property management provides responsive, professional attention.

TOBY winner!

17 Skyline Drive—2006 recipient of The Office Building of the Year (TOBY) Award for office buildings under 100,000 square feet.

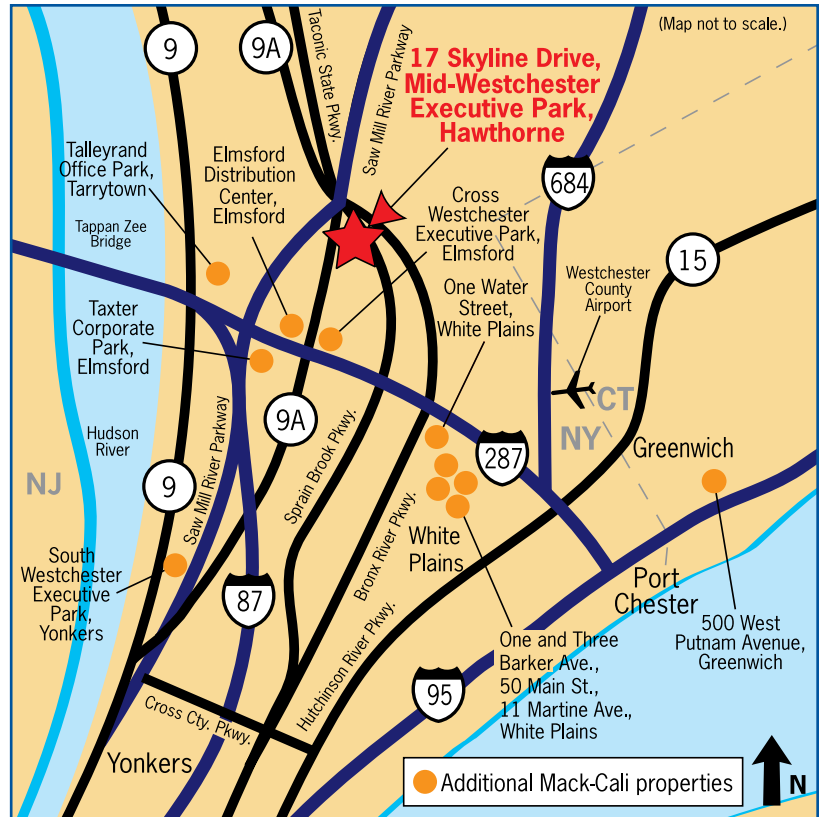
Mid-Westchester Executive Park—Past recipient of the TOBY Award for low-rise suburban office parks.

Both awards were presented by the Westchester Chapter of the Buildings Owners and Managers Association for excellence in property management.

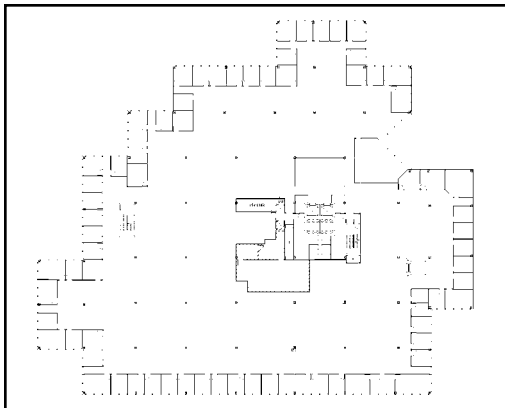

Realty Corporation
mack-cali.com

Superb Westchester location

- Adjacent to the Route 9A technology corridor—just two miles north of the Cross Westchester Expressway (I-287)
- Less than five miles from the Tappan Zee Bridge with access to Rockland County and Northern New Jersey
- Direct access to the Saw Mill River Parkway and nearby access to the Sprain Brook and Taconic Parkways
- Ten minutes from downtown White Plains and 20 minutes from the Westchester County Airport
- Bee-Line bus service in the Park with service to White Plains Transportation Center and throughout the County
- Five minutes from the Hawthorne station on Metro-North's Harlem Line with 45 minute service to Grand Central Terminal in New York City



17 Skyline Drive provides direct access to the many highways serving the region.



Typical floor: approximately 45,000 sf

For further information, contact the Mack-Cali Leasing Department at 914.592.4800 or e-mail: leasing@mack-cali.com



New York/Connecticut
Regional Office:
100 Clearbrook Road
Elmsford, NY 10523



The 75-acre Mid-Westchester Executive Park offers an exceptional business location with buildable land available for tenant expansion opportunities.

The information contained herein is for guidance only. This publication is subject to errors, omissions, prior sale, lease or withdrawal from market without notice and does not constitute an offer, nor is it binding on either party.

© 2006 Mack-Cali Realty Corporation